

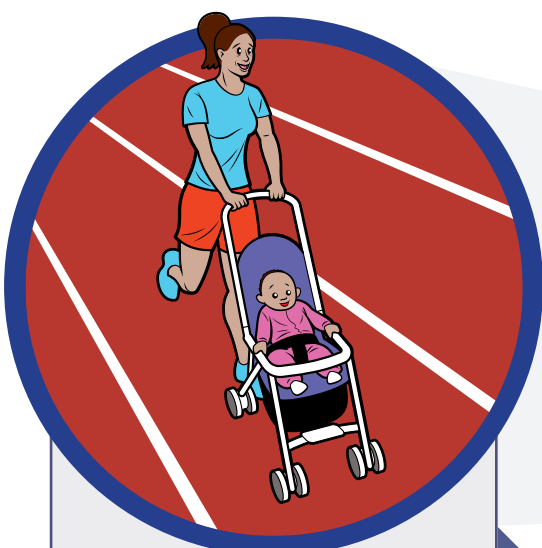
FAMILY CENTERS

GUIDING FAMILIES ACROSS THE FINISH LINE OF SUCCESS

Family Centers' comprehensive network of programs offers families continuous support as we collectively work to close the Opportunity Gap.

A GROWING SENSE of educational disparity is hindering a segment of Fairfield County's children from succeeding in school and developing the skills necessary to lead productive and fulfilling lives. The **Opportunity Gap**, this inequity of educational and community support services, is often attributed to social issues including a lack of parent involvement, inadequate housing, access to health care and vocational training.

FAMILY CENTERS' APPROACH: Family Centers' continuum of health, education and human service programs offers families a **two-generational solution** to closing the Opportunity Gap. Our services focus on the entire family to provide continuous support as children progress through school and begin careers. By addressing the root causes of the Opportunity Gap at the earliest stages (prenatally) and intervening throughout a child's life, Family Centers is ensuring local families gain the tools they need to cross the "finish line" of long-term success.



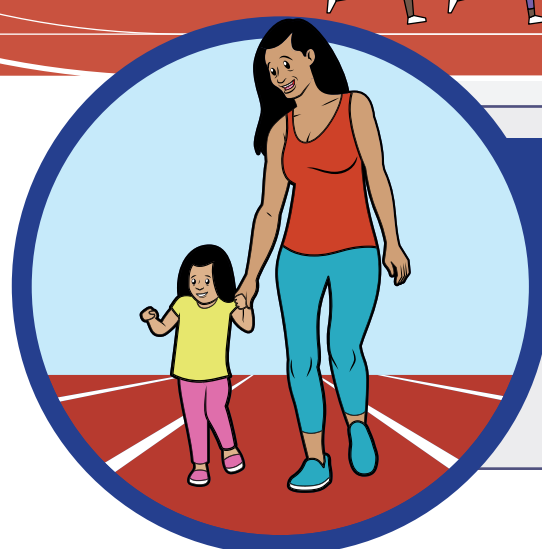
MINDING THE BABY

Helps parents establish early bonds with their babies by focusing on maternal and child health, parent-infant attachment, developmental guidance and parenting support.



GREENWICH PARENTS AS TEACHERS (GPAT)

Home visitation support helps parents build the skills they need to foster their children's social-emotional and physical development. Greenwich PAT is a key component of the **Greenwich United Way's Early Childhood Achievement Gap Solutions (ECAGS)** initiative.



NURTURING FAMILIES NETWORK

Promotes positive child development through home visits and support to guide first-time parents during the first five years of parenthood.



REACHING INDEPENDENCE THROUGH EMPLOYMENT

Preparing young adults and graduating teens for entry into the workforce through vocational training, job search support, internships and goal planning support.



SCHOOL BASED HEALTH CENTERS

Opening the doors to medical, dental and mental health services for children attending Stamford Public Schools.



FAMILY FIRST IN EDUCATION

Improving education and family outcomes through structured afterschool programming and wrap-around parent engagement services.



PARENTS AS CO-EDUCATORS

Coaching and support empowers parents to become better advocates for their children's education and improves kindergarten-readiness.



EARLY CARE AND EDUCATION

Nationally-accredited and curriculum-based early care and preschool services provide young children with a solid educational foundation.

OTHER FAMILY CENTERS PROGRAMS ADDRESSING THE OPPORTUNITY GAP

- Community and Supportive Services
- Counseling & Mental Health Services
- Family Centers Health Care
- Family Self Sufficiency Program
- Literacy Volunteers

OUR PARTNERS

- | | |
|---|---------------------------------|
| Building One Community | Greenwich United Way |
| Children's Learning Centers of Fairfield County (CLC) | Greenwich YMCA |
| City of Stamford | Stamford Cradle to Career |
| Town of Greenwich | Stamford Public Schools |
| Greenwich Public Schools | Vita Health & Wellness District |



visit www.familycenters.org for more info on our programs